

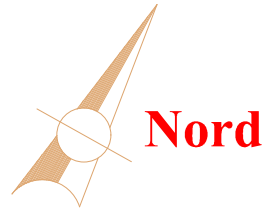


SOCIETE IMMOBILIERE DALIA
RESIDENCE DALIA

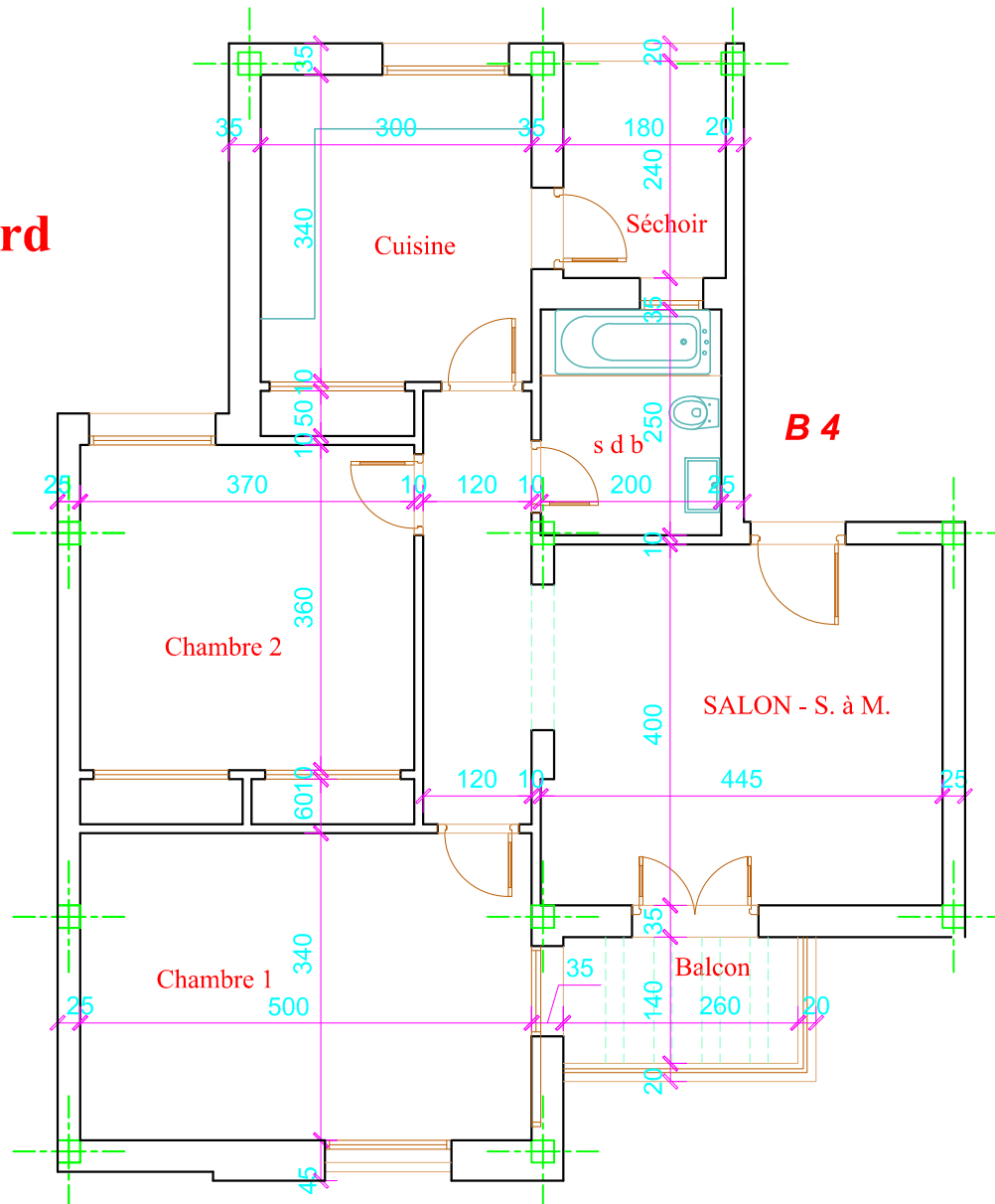
CONSTRUCTION D'ENSEMBLE
RESIDENTIEL ET COMMERCIAL
sis à **EZZAHROUNI**

TYPE DE LOGEMENT	APPT
NIVEAUX	2 ^{ème}
BLOC	B

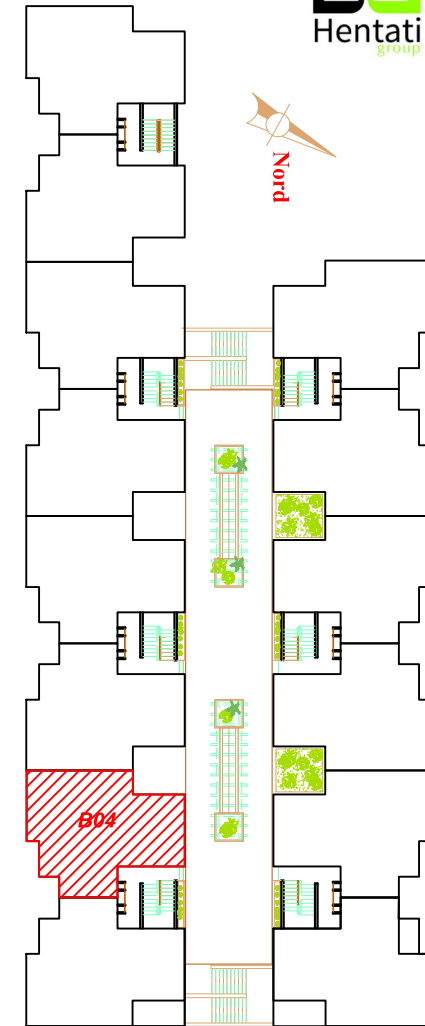
B.0.4



Nord



Nord



Désignation	Surface(m2) approximative
Surface Hors Oeuvre	102.6 m ²
quote part dans les parties communes	12%
Surface Plancher	115 m ²